



All Kwik Goal products carry a **Lifetime Guarantee**. For help with guarantee issues visit kwikgoal.com and click on the **Lifetime Guarantee** logo or contact customer service at 1-800-531-4252.

**ASSEMBLY INSTALLATION INSTRUCTIONS FOR
7B101 SOCCER BACKSTOP AND 7E101 LACROSSE BACKSTOP**

NOTE: THIS UNIT REQUIRES TWO OR MORE QUALIFIED PERSONS FOR ASSEMBLY AND INSTALLATION. ANY MODIFICATIONS TO THIS OR ANY KWIK GOAL PRODUCT WILL VOID ANY AND ALL WARRANTIES.

1. Unpack all parts and check for any damage that may have occurred during shipping. If damage has occurred notify trucking company immediately. Lay out all parts. Remove all cardboard or packaging immediately. Wet or damp packaging may damage contents.
2. Assemble uprights (A) as shown in figure 1.
3. Dig 4 holes a minimum of 49 1/4" deep and 24" across in locations shown in figure 2.
4. Prepare holes as shown in figure 3.
5. Set ground sleeves (B) into holes, place upright (A) into ground sleeve (B) as shown in figure 3.
6. Plumb and level all uprights (A) and seal joint between ground sleeve (B) and upright (A) using tape (this will stop debris from entering ground sleeve (B) during initial installation.)
7. Pour concrete to top of ground sleeves (B) as shown in figure 3.
8. Allow concrete to cure.
9. Unroll net (E) in front of uprights (A).
10. Attach snap hooks (D) to net (E). Hoist net (E) off field surface. See figures 4 & 5.
11. Secure bottom of net (E) with plastic net pegs (H). See figure 6.
12. When removing uprights (A) from ground sleeves (B) be sure to install ground sleeve caps (C) to prevent debris from entering.
13. After reassembly be sure to reseal the seam between upright (A) and ground sleeve (B) to prevent debris from entering.

******CAUTION******

All sports equipment must be anchored at all times. Sports equipment not in use must be disassembled and stored in a safe, secure place. Assembled sports equipment should not be left unattended. Do not use this equipment during the threat of high winds. Sports equipment should be checked for safety on a regular basis. Any modifications to this or any Kwik Goal

140 Pacific Drive Quakertown, PA 18951
(P) 215- 536-2200 / (P) 800-531-4252 / (F) 215-536-4309 / (F) 800-778-8869
Visit our website @ kwikgoal.com
© 2001, Rev 2008 Kwik Goal Ltd.

product will void any and all warranties.

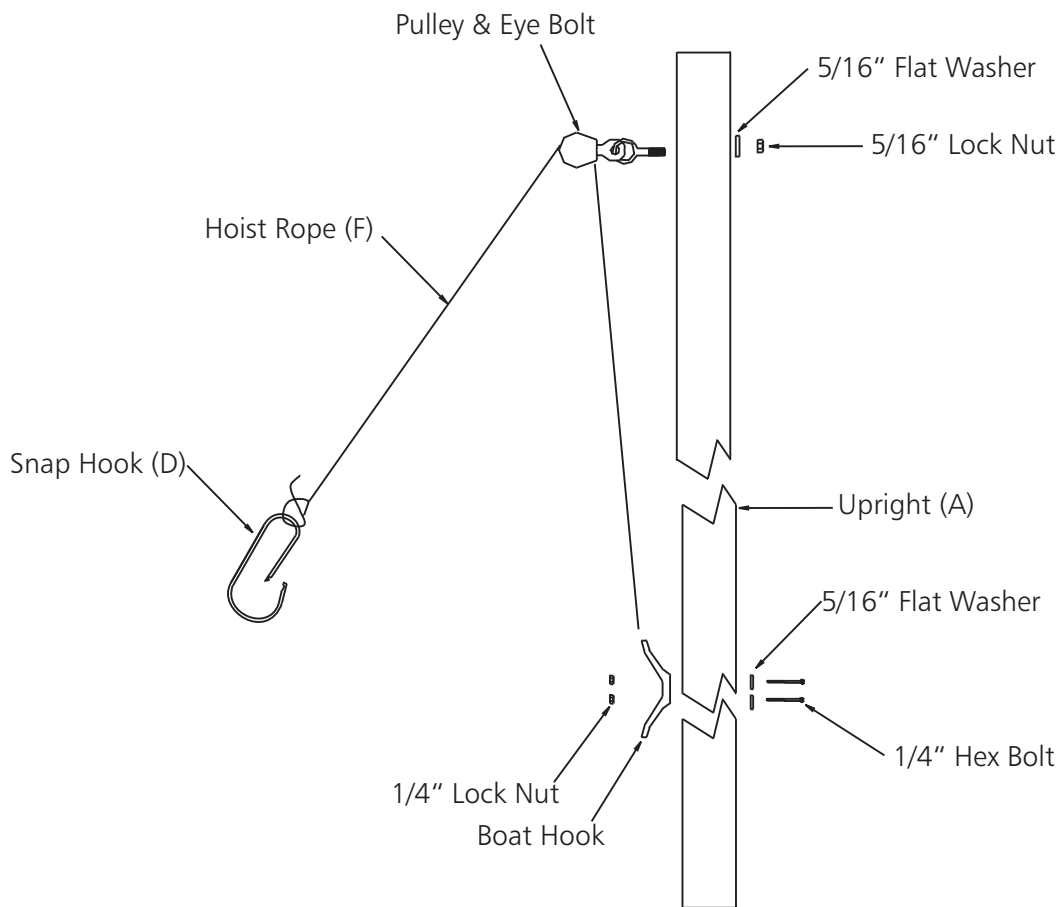
Parts List

- A) Uprights (4)
- B) Ground Sleeves (4)
- C) Ground Sleeve Caps (4)
- D) Snap Hooks (4)
- E) Net (1)
- F) Hoist Ropes (4)
- G) Boat Hooks (4)
- H) Plastic Net Pegs (8)

Hardware

- Pulley & Eye Bolts (4)
- 1/4" Hex Bolts (8)
- 1/4" Lock Nuts (8)
- 5/16" Lock Nuts (4)
- 5/16" Flat Washers (12)

Fig. 1



*****CAUTION*****

All sports equipment must be anchored at all times. Sports equipment not in use must be disassembled and stored in a safe, secure place. Assembled sports equipment should not be left unattended. Do not use this equipment during the threat of high winds. Sports equipment should be checked for safety on a regular basis. Any modifications to this or any Kwik Goal product will void any and all warranties.

Fig. 2
Top View

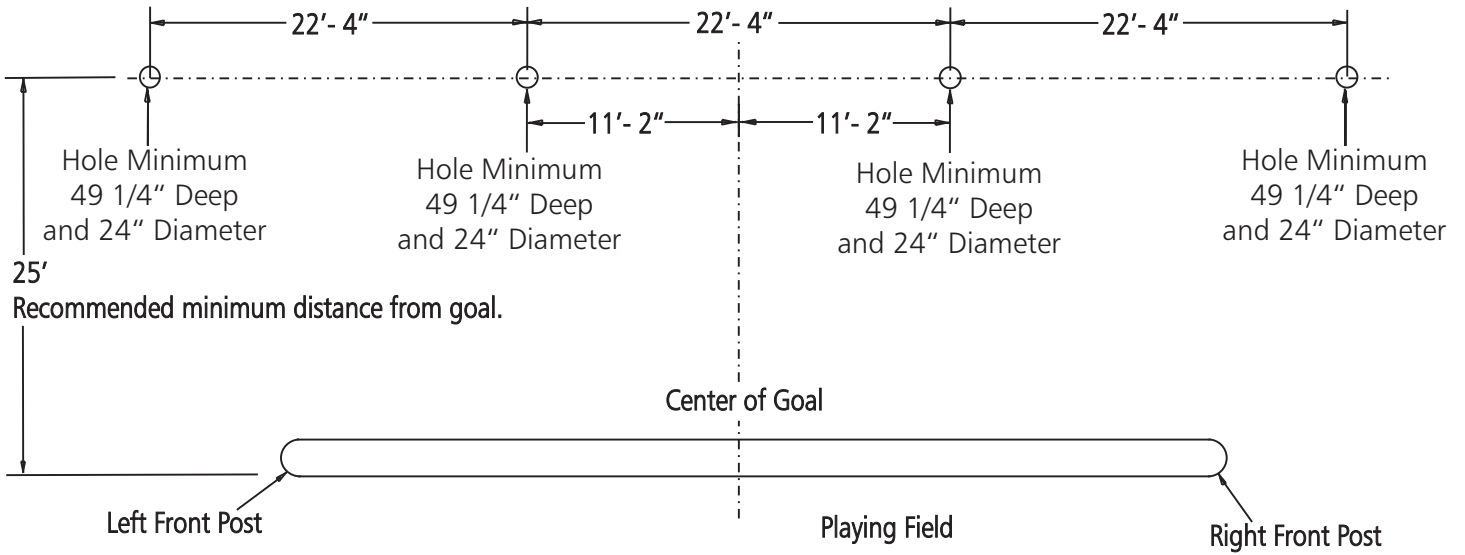
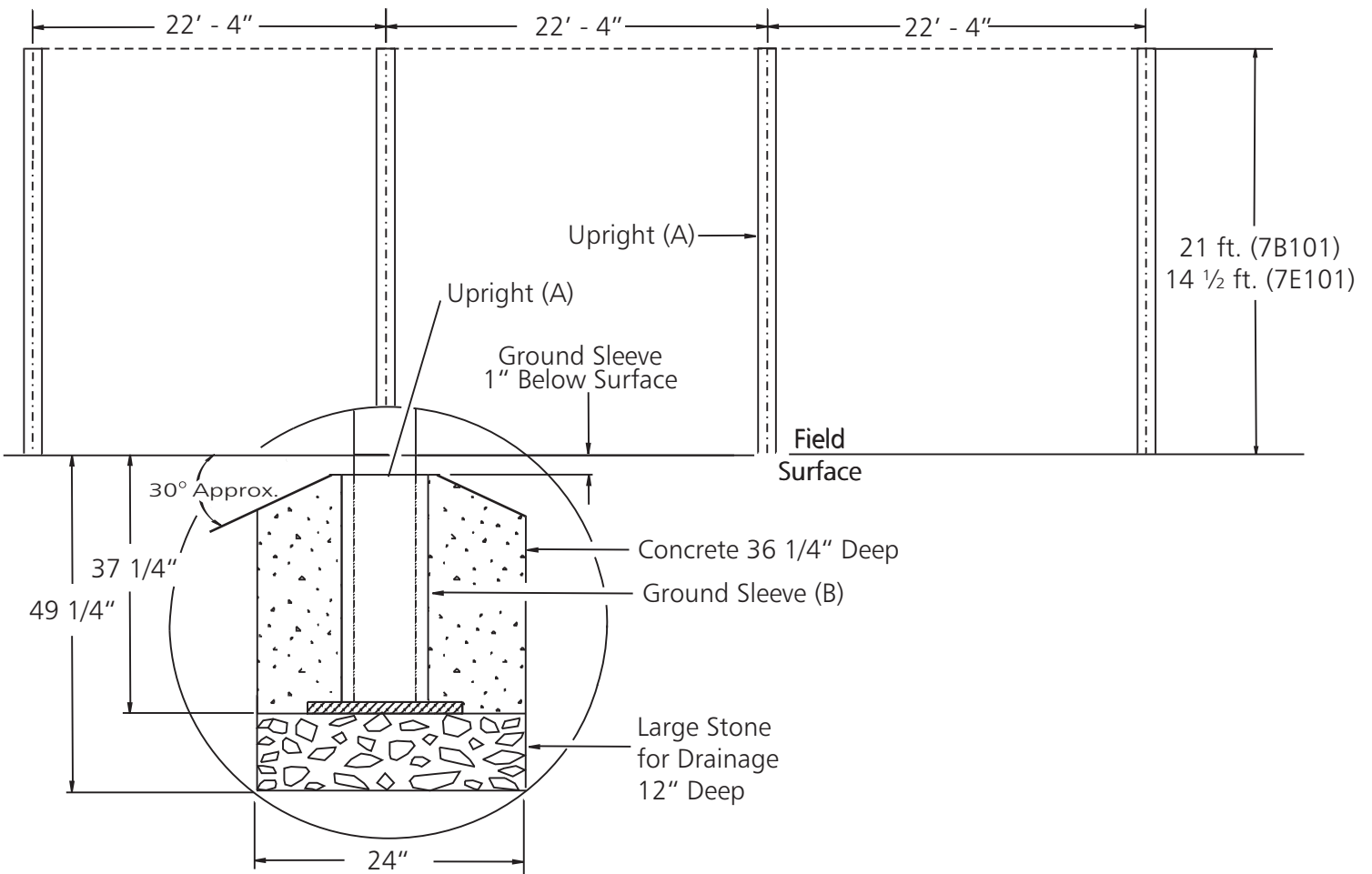


Fig. 3
Front View



*****CAUTION*****

All sports equipment must be anchored at all times. Sports equipment not in use must be disassembled and stored in a safe, secure place. Assembled sports equipment should not be left unattended. Do not use this equipment during the threat of high winds. Sports equipment should be checked for safety on a regular basis. Any modifications to this or any Kwik Goal product will void any and all warranties.

Fig. 4
Front View

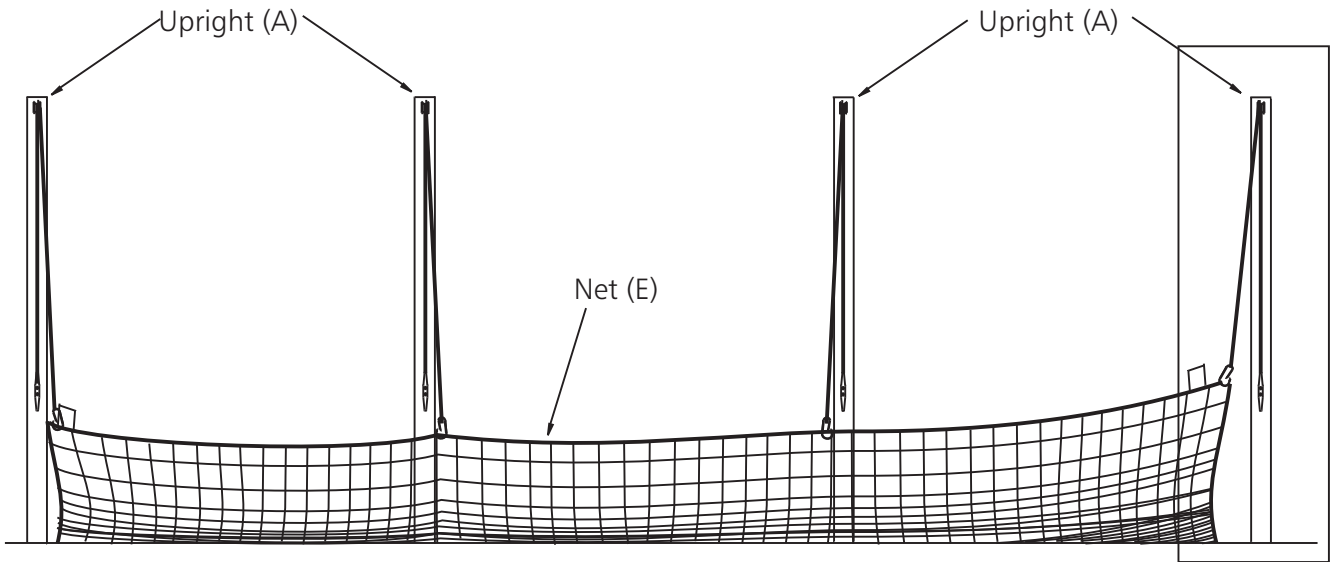
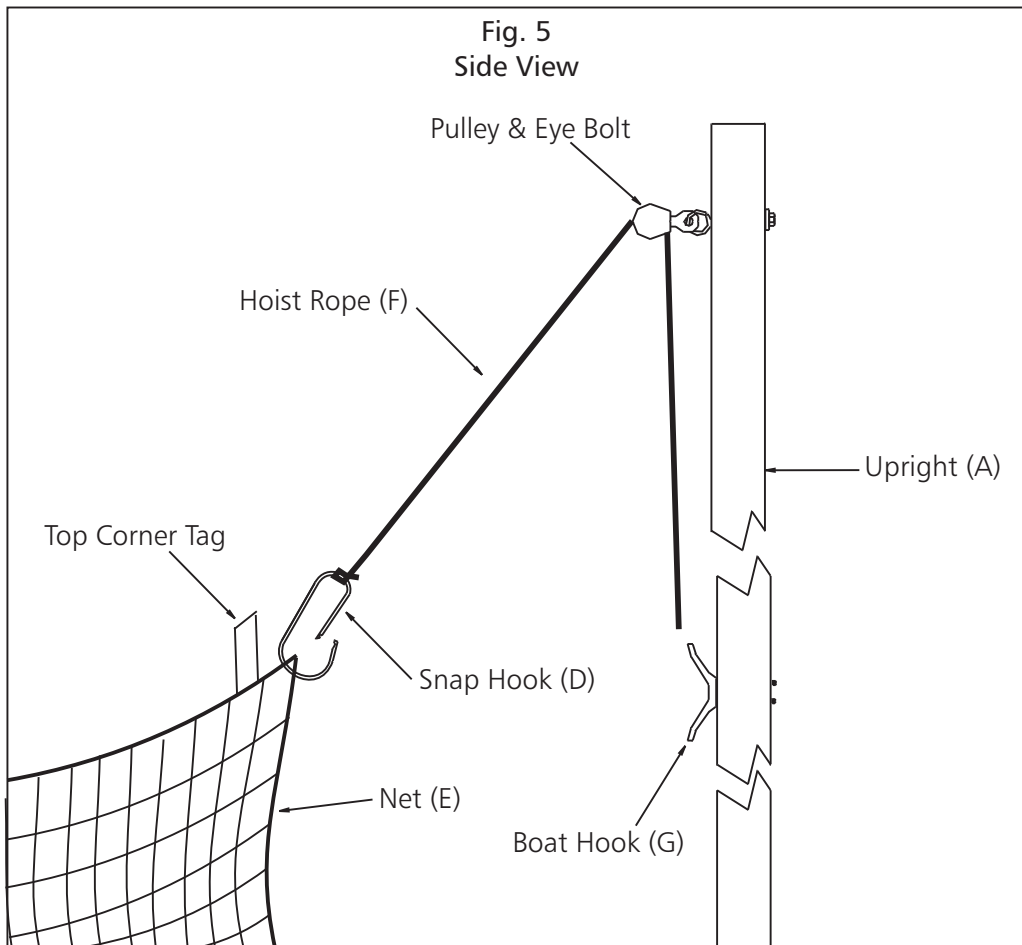


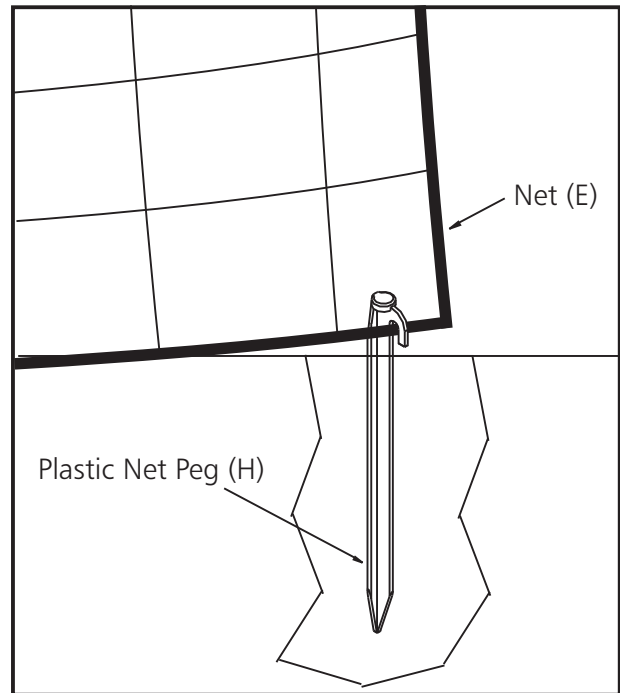
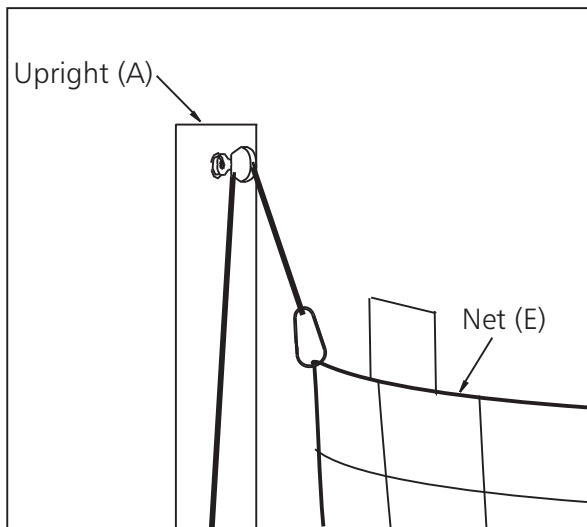
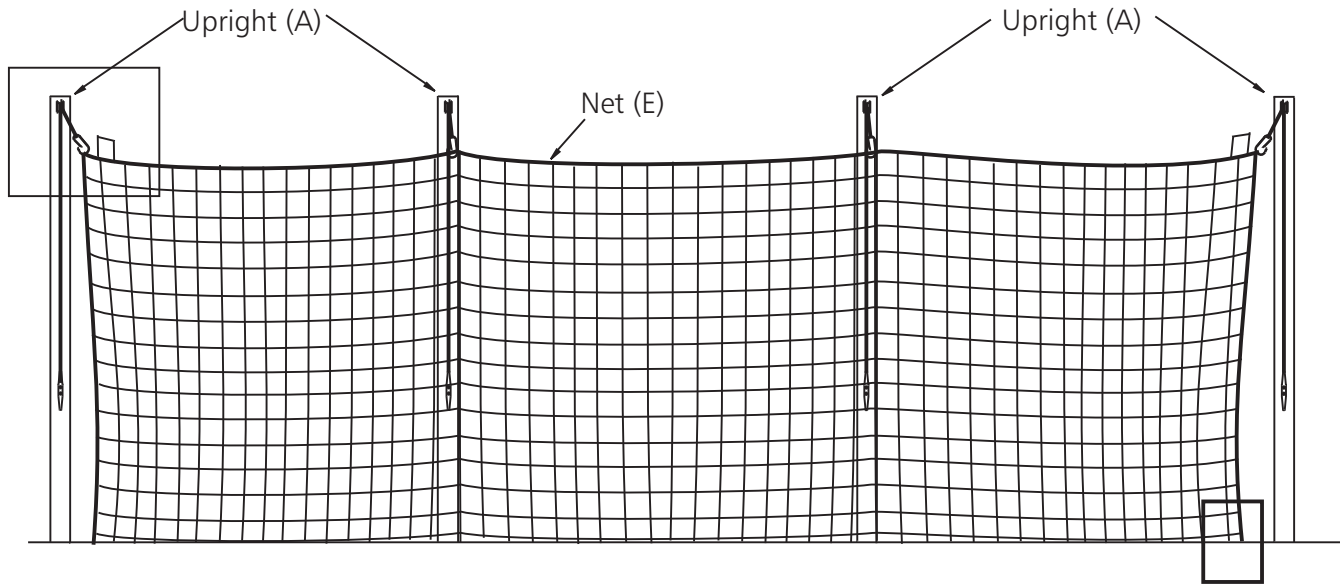
Fig. 5
Side View



*****CAUTION*****

All sports equipment must be anchored at all times. Sports equipment not in use must be disassembled and stored in a safe, secure place. Assembled sports equipment should not be left unattended. Do not use this equipment during the threat of high winds. Sports equipment should be checked for safety on a regular basis. Any modifications to this or any Kwik Goal product will void any and all warranties.

Fig. 6
Front View



*****CAUTION*****

All sports equipment must be anchored at all times. Sports equipment not in use must be disassembled and stored in a safe, secure place. Assembled sports equipment should not be left unattended. Do not use this equipment during the threat of high winds. Sports equipment should be checked for safety on a regular basis. Any modifications to this or any Kwik Goal product will void any and all warranties.